

# Viral Voting: Social Networks and Political Participation

Nicholas Eubank,<sup>\*</sup>  
Guy Grossman,<sup>†</sup>  
Melina Platas,<sup>‡</sup>  
Jonathan Rodden<sup>§</sup>

July 1, 2019

## Abstract

Social context theory suggests that an important driver of political participation is the behavior of family, friends, co-workers and neighbors. How do social ties between individuals shape equilibrium behavior in larger populations? Despite theoretical inroads into this question, direct empirical tests remain scarce due to data limitations. We fill this gap using full social network data from 15 villages in rural Uganda, where village-level turnout is the outcome of interest. We find that levels of participation predicted by structural features of village networks are strongly associated with actual village-level turnout in low-salience local elections, and weakly associated in high-salience presidential elections. We also find these features predict other forms of political participation, including attending village meetings and contributing to village projects. In addition to demonstrating that networks help explain political participation, we provide evidence that the mechanism of influence is that proposed by social context theory rather than alternative mechanisms like the presence of central brokers or the ability of networks to diffuse information.

**Key words:** Turnout, networks, social context, Africa

---

<sup>\*</sup>Center for the Study of Democratic Institutions, Vanderbilt University, [nick@nickeubank.com](mailto:nick@nickeubank.com)

<sup>†</sup>Department of Political Science, University of Pennsylvania and EGAP, [ggros@sas.upenn.edu](mailto:ggros@sas.upenn.edu)

<sup>‡</sup>Department of Political Science, New York University Abu Dhabi, [mplatas@nyu.edu](mailto:mplatas@nyu.edu)

<sup>§</sup>Department of Political Science, Stanford University, [jrodden@stanford.edu](mailto:jrodden@stanford.edu)

When does voting (and other forms of participation) go viral? Individuals' voting behavior can often be traced to that of their peers, and voting behavior is sensitive to social pressure (Ioannides, 2013; Gerber, Green and Larimer, 2008). When does voting spread across entire social networks, resulting in high voter turnout, and when does it die out? While our social ties define who is likely to directly influence our behavior, scholars have suggested that it is the *structure* of whole networks that determines how changes in individuals' behavior interact to shape equilibrium behavior in broader populations (Siegel, 2009; Sinclair, 2012; Rolfe, 2012; Fowler, 2005; Larson et al., 2017).

Social context theory posits that an individual's likelihood of political participation is determined by two components: a personal disposition to participate and the level of participation among one's peers (Fowler, 2005; Siegel, 2009; Rolfe, 2012). The distribution of personal dispositions, the network location of those with high disposition toward participation, and the structure of the network as a whole, all affect whether a few social entrepreneurs can generate high levels of participation within the network. Due to data constraints, however, the implications of this theory are rarely tested in real-world (as compared to fully simulated) settings.

In this paper we use complete network data from 15 rural villages in Uganda to examine whether structural features of social networks can explain when voting goes viral. We find that they can – predicted levels of participation based on network properties are associated with real-life voter turnout within the network. This relationship holds strongly for low-salience local elections, and weakly for high-salience presidential elections. This latter finding suggests that peer influence and structural features of social networks will not always matter equally for voter turnout. Rather, features of social networks are likely to matter most in low salience elections where many voters may lack information and motivation to vote in the absence of prompting from politically inclined peers.

Specifically, we build on simulation methods from Siegel (2009) and Rolfe (2012) to estimate the Theoretically-predicted level of Political Participation (TPP) that these networks should generate if social context theory is correct. We then test whether these predicted levels of participation correspond with actual voter turnout, and consistent with social context theory,

we find they are strongly positively correlated. We then present a set of analyses designed to go beyond the observation that “networks matter,” and explicitly test whether the specific mechanism of network influence that social context theorists describe are indeed at work.

First, we draw upon the rich data collected alongside our network data to validate our results. We show that villages with high TPP also have substantially higher attendance at village meetings, and have somewhat higher contributions to village projects (in time, cash, or labor), providing two more data points in support of social context theory. Using lab-in-the-field behavioral games, we rule out the possibility that network structure and political participation are both being driven by individual-level other-regarding preferences. And consistent with social context theory, we find that social networks appear to be substantially more important in the lower-salience elections for district chairperson (where news media provides less non-network information on the behavior of others) than in the high-salience presidential election (where information about the participation decisions of fellow citizens comes both from their networks and news, rallies, etc.).

Second, we test whether our results may be driven by other mechanisms by also measuring alternate features of network structure—features that would shape political participation if network influence was operating through a channel other than that proposed by social context theory. For example, one common story for network influence is that networks *diffuse information* that drive participation, by either increasing awareness of elections and candidates (McClurg, 2003), or by facilitating the application of social pressure (Eubank and Kronick, 2019; Larson, 2017). As we show, however, information diffusion simulations generate different predictions about which networks should support high political participation than do social context models, and our social context measures continue to predict turnout even when controlling for the efficiency with which a network spreads information. Similarly, theories of brokers suggest that network influence works through the presence of high-centrality individuals (Rojo, Jha and Wibbels, 2014). However, we show that our social-context-derived measure is not just proxying for the presence of high-centrality individuals by re-running our estimates without the highest degree nodes, a subsetting which only strengthens our results.

Through these exercises, we are able to provide novel, consistent evidence in support of the idea that the *mechanism* of network influence is that described by social context theory.

## 1 Social Context Theory

Our analysis focuses on the “social context” model of social influence, which posits that an individual’s likelihood of political participation is determined by two components: a personal disposition to participate affected by factors such as income, gender and education (Wolfinger and Rosenstone, 1980), and the level of participation among one’s peers (Fowler, 2005; Siegel, 2009; Rolfe, 2012). According to this model, while some people will always be inclined to participate politically (individuals labeled “unconditional” decision makers by Rolfe (2012) and “rabble-rousers” by Siegel (2009)), others will only participate if they observe sufficient levels of participation among their peers.

The influence of social context has been documented in psychology experiments (Ross and Nisbett, 2011). In some cases, mirroring behavior may be the result of Bayesian updating by rational agents about the desirability of a behavior or strategic social conformity (Goyal, 2012), but research also suggests this dynamic may not be fully conscious (Cialdini, 2015).

While this mechanism of influence has been well-documented among individuals, the dynamics of diffusion to larger populations has received less empirical attention. This is due to the fact that social context models assume fundamental interdependencies in behavior that require the use of complete network analysis for studying macro social influence processes. If we wish to understand how the behavior of a few rabble-rousers may or may not propagate across a population, it is not enough to just look at individuals and their immediate peers. Rather, we must work with full networks so we can examine how the higher-order topological features of network structure shape not only who we interact with directly, but also how our influence may potentially spread beyond our immediate contacts to the broader network.

One core theoretical result is that there are no easy answers when it comes to predicting how social influence may spread through a network (Centola and Macy, 2007; Jackson and Yariv,

2010). Simple measures like average number of connections or average shortest paths cannot explain whether the actions of a few people in a network will have larger effects. Rather, influence dynamics are shaped by numerous topological features of social networks (Centola, 2015), and simulation remains the primary method of determining how a given network will support diffusion processes.

To date, however, it has been difficult to corroborate the results of theory-driven simulations due to the paucity of real-world network data. Because social context theories make predictions about equilibrium behavior in groups, testing them requires not only data on *one* full network, but data on the full networks of *multiple communities* along with community-level measures of political participation to allow for cross-sectional analysis. Such data is rare [but see, Cruz, Labonne and Querubin (2017)].

We fill this gap in the literature by estimating the Theoretically-predicted level of Political Participation (TPP) based only on the structure of village networks using the theoretical insights of Siegel (2009) and Rolfe (2012). These values of TPP are then correlated with actual turnout for two types of elections that took place in Uganda in 2016.

## **2 Data**

This analysis relies on two primary sources of data: network data collected as part of an original survey, and precinct-level data on turnout in Uganda's 2016 Presidential elections and in elections for the chief executive (chairperson) of the district government, the highest subnational tier of government in Uganda below the central government.

### **2.1 Network Data**

We collect data from 16 Ugandan villages that took part in a multi-year program called Governance, Accountability, Participation, and Performance (GAPP), which was implemented by RTI International and funded by the United States Agency for International Development (US-

AID).<sup>1</sup> Using individual-level network surveys targeting all village residents, we are able to construct 16 independent “whole” networks (although as discussed below only 15 proved comparable in scale and thus usable) by using a simple name generator technique (Knoke and Yang, 2008), eliciting information on respondents’ familial and friendship ties, as well as ties to village money lenders and more generally, local ‘problem solvers’. Comparing household roster data with network surveys, we believe we reached over 80% of village residents. Following standard practice, individuals who did not complete a network survey were dropped from the analysis. See Appendix A and Ferrali et al. (2019) for full survey details.

These network surveys are used to compute empirical networks: the *Friends and Family* network, which consists of all connections listed as “friends” or “family”, and the *Union Network*, which consists of the friends and family network plus ties reported as people the respondent “would go to if they had to borrow money” and people he or she “would go to in order to solve a problem regarding public services in the village.” All networks are undirected (i.e., do not require reciprocity of ties), and are unweighted. Results are also consistent, and in fact stronger, when limiting attention to reciprocated ties, although we argue that allowing for non-reciprocated ties generates more meaningful networks (See Appendix H for further discussion).

Throughout this analysis, attention is restricted to 15 of the 16 villages originally included in the survey. This is because the 16th village is substantially smaller than any other village under consideration. While the 15 core villages have between 160 and 283 residents, the omitted village network has only 30 people. Summary statistics for the 15 empirical networks in our primary analyses are presented in Table 1. Results with the inclusion of the 16th village can be found in Appendix G.

Table 1: Network Summary Statistics

	Union	Friends	Family	Lender	Solver
Average Size	210.3	210.3	210.3	210.3	210.3
Average Num Connections	1,693.9	520.4	810.9	403.3	450.2
Average Degree	15.9	4.9	7.7	3.8	4.2
Min Size	160.0	160.0	160.0	160.0	160.0
Max Size	283.0	283.0	283.0	283.0	283.0

<sup>1</sup>The number of villages was determined by resource constraints.

## 2.2 Turnout Data

Data on turnout comes from precinct-level electoral returns and the official voter register as compiled by the Electoral Commission of Uganda. Because precincts, or polling stations, do not correspond precisely to Ugandan villages, we extrapolate turnout using the voter registration data, which provides information on the precinct at which residents of each village are registered. In particular, our analysis relies on the assumption that votes cast at each precinct were cast by residents of villages in proportion to each village's share of voters registered at the precinct. For more details of interpolation, see Appendix B.

Average turnout for the Presidential election in our data was 60% (compared to 68% nationally); average turnout for the district chairperson was 25% (compared to 31% nationally). Turnout across the elections is correlated at 0.61%, suggesting the elections are distinct but that villages with high turnout tend to have high turnout independent of election type.

## 2.3 Simulating Social Context Dynamics

Social context theory is premised on the assumption that individuals are more likely to participate politically if their peers do so. To understand the dynamics of how this assumption shapes behavior on different types of networks, we use a slightly modified version of the simulation model of Siegel (2009), which is substantively analogous to Rolfe (2012). Details of our small technical modification to Siegel (2009) can be found in Appendix C.

The starting point of the simulation is that vertices  $v \in V$  in a network choose whether or not to participate in a political activity. Initially, the simulation begins with all vertices endowed with some *individual* proclivity to participate. All vertices are assumed to begin in a state of non-participation at  $t = 0$ , but in the first stage, vertices (or nodes) with very high individual proclivities begin to participate. In each state of the simulation, vertices observe the behavior of *only* their peers and then decide whether to participate. A vertex decision to participate is increasing in the share of her peers that are participating. The simulation then continues this cycle of vertices observing their peers, updating their own behavior, then observing their peers

once more until the network converges to a stable configuration in which behavior no longer changes between stages. More specifically, the simulation proceeds as follows:

*Stage 1: Model Initialization*

- Vertices are randomly assigned an individual propensity to participate  $\beta_v \sim Normal(\beta_{mean}, \beta_{sd})$ . Once assigned, these values are fixed for the duration of the simulation.
- All vertices begin in a state of non-participation ( $participation_{v,0} = 0 \forall v \in V$ )

*Stage 2: Social Influence Simulation*

- At each step of the simulation  $t \in T$ , each vertex  $v \in V$  calculates a *local participation rate* ( $lpr_{v,t}$ ) which is equal to the share of the people connected to  $v$  at time  $t$  in the network who also plan to participate. These two factors can then be combined using a very simple decision rule:  $participation_{v,t+1} = 1$  if  $\beta_v - (1 - lpr_{v,t}) > 0$ .
- Calculate overall “Theoretically Predicted Participation”  $TPP_t = \frac{\sum_v participation_v}{|V|}$ .
- Repeat Stage 2 until the value of  $TPP$  converges.

Several aspects of this framework are worth noting. First, individuals with high values  $\beta$  (specifically,  $\beta > 1$ ) will participate politically *even if none of their immediate neighbors plan to participate*. Similarly, individuals with very low values of  $\beta$  ( $\beta < 0$ ) will never participate, even if all of their peers are participating. For anyone with a value of  $\beta \in (0, 1)$ , there is a threshold level of peer participation that will induce those individuals to participate. For example, if  $\beta_v = 0.5$ , then  $v$  will participate if and only if at least half of her friends participate.

The second aspect of this model is that it is dynamic. We begin in a state of non-participation at time  $t = 0$ , then in the first period only people with  $\beta > 1$  will participate. But as people with  $\beta > 1$  announce they are participating, that changes the value of  $lpr$  for everyone connected to one of these rabble-rousers, potentially leading them to plan to participate as well. These spillovers may—but also may not, *depending on network structure*—cascade for a period of time before eventually the network stabilizes into an equilibrium level of political participation, which may occur at any level between no one participating and everyone participating.



The focus of our analysis is on the average level of political participation to which this model converges for given values of  $\beta_{mean}$  and  $\beta_{sd}$  – what we term Theoretically Predicted Participation (TPP). TPP is calculated by simulating this process of influence repeatedly on the network of each village until the simulation converges, then calculating the average level of participation at these convergent states. In other words, TPP is a network structure property. For a given pair of parameters  $\beta_{mean}$  and  $\beta_{sd}$ , villages whose networks converge to higher levels of *simulated* participation (higher TPP) should also have higher levels of *actual* (observed) voter turnout.

Importantly, the use of simulations is motivated by the fact that whether a network will support a “snowballing” of social influence or not has no mechanical relationship to basic network properties (like average number of connections or degree distribution). This is because in a social context model, adding connections among individuals doesn’t just increase exposure of individuals to rabble rousers (which will increase an individual’s likelihood of participating); it also increases exposure to non-participants (which will depress participating). In a simulation where rabble rousers are relatively rare, for example, participation will only snowball if the network has small pockets where these rabble rousers constitute a large portion of the local neighborhood, making it possible for them to have sufficient influence to induce others in their pocket to participate, generating a critical mass of participants. In a fully connected network, if rabble rousers are rare globally, they will also be rare in every local neighborhood, and thus will never induce increased participation. It is for this reason that small-world networks are often most supportive of high equilibrium TPP Siegel (2009). The only way to know if political participation will spread on a network, therefore, is through simulation.

Of course, this is not to say that different network properties may not be highly correlated. Indeed, in our data, the correlation between average degree and index of simulated equilibrium participation turns out to be 0.96 for the Union network. If replicated in other social network data sets, this may suggest that real-world social networks tend to have topologies in which degree is related to ability to support participation snowballs, a finding which would have important implications for the interpretation of analyses of average degree.

## 2.4 Simulation Result Summary

We focus on parameter values of  $\beta_{mean} \in \{0.5, 0.6, 0.7\}$  and  $\beta_{sd} \in \{0.25, 0.5\}$ . These parameter values are chosen because they effectively cover the entire range of values that give rise to interesting dynamics in our networks. Significantly higher values of  $\beta_{mean}$  tend to result in convergence to full participation, while substantially lower values lead to non-dynamic simulations (those with values of  $\beta > 1$  participate, but they are rare and others tend to have very low proclivities to participate, as a result of which almost no vertices flip from non-participation to participation). Similarly, larger values of  $\beta_{sd}$  increase the share of individuals whose behavior is unaffected by the behavior of other so much that the simulations tend not to be dynamic. In these non-dynamic settings, all networks are essentially comparable, as participation ends up being roughly equal to the share of nodes with  $\beta_{mean} > 1$ , which is the same for all networks in expectation. Note that we exclude one parameter pair from those sets ( $\beta_{mean} = 0.5, \beta_{sd} = 0.25$ ), as it generates almost no unconditional participators, and thus no dynamics.

Average TPP scores across study area villages for different parameter values and network specifications are presented in Table 2. Moreover, the inter-village correlation in TPP scores across this parameter space is quite high, as shown in Tables 3-7 in Appendix E. The overall average correlation across parameters for the Union network is 0.68, and so for ease of exposition (and to reduce the number of regressions we run on the same data), most of the following results will be presented using an index constructed as the first principle component of these statistics for each network type.

Table 2: Average Theoretically-Predicted Participation (TPP)

$\beta_{mean}$	$\beta_{sd}$	Mean, Union	Mean, Family	Mean, Friends	Mean, Lender	Mean, Solver
0.50	0.50	0.42	0.39	0.36	0.35	0.36
0.60	0.50	0.67	0.59	0.54	0.51	0.53
0.60	0.25	0.45	0.38	0.30	0.24	0.23
0.70	0.50	0.83	0.77	0.71	0.67	0.70
0.70	0.25	0.98	0.96	0.89	0.80	0.74

*Notes:* This table presents average simulated TPP levels across villages for different parameter values and network specifications. Correlations between village TPP scores across different parameters can be found in Appendix E.

### 3 Social Context and Turnout

Figure 1 presents the bivariate correlation between the TPP (operationalized as the first principle component of normalized TPP scores across all parameter choices) and actual turnout in the Presidential and district (LC5) elections for the Union network. Note that while TPP is surely estimated with some measurement error, as it enters into our regressions as an independent variable, this will only result in attenuation bias, generating conservative estimates of statistical significance. Regression tables and results for separate network types can be found in Appendix F.

First, in both LC5 specifications, TPP is positively correlated with turnout. Second, the results are significant, despite our very small sample size, attenuation bias from measurement error in estimation of TPP, and noise in our dependent variable introduced from estimating voter turnout (which will also depress significance). Moreover, the correlation between these factors appears relatively uniform — results are not being driven by outliers, as is the risk in small-N studies — and the relative consistency across specifications provides further evidence of a genuine relationship.

These correlations are also robust to the introduction of different controls and sample restrictions. As shown in Appendix G, results are consistent when controlling for ethno-linguistic fractionalization or the share of each village that has completed primary school, or when restricting the sample to the set of villages for which our estimates of turnout are likely most accurate. Point estimates are also very stable (albeit not significant) when controlling for network size and when including the exceptionally small 16th village and controlling for size. Finally, results are similar when allowing for only reciprocated friend and family ties, although as discussed in Appendix H, the very low degree count for reciprocated family and friend networks means this is not our preferred specification.<sup>2</sup>

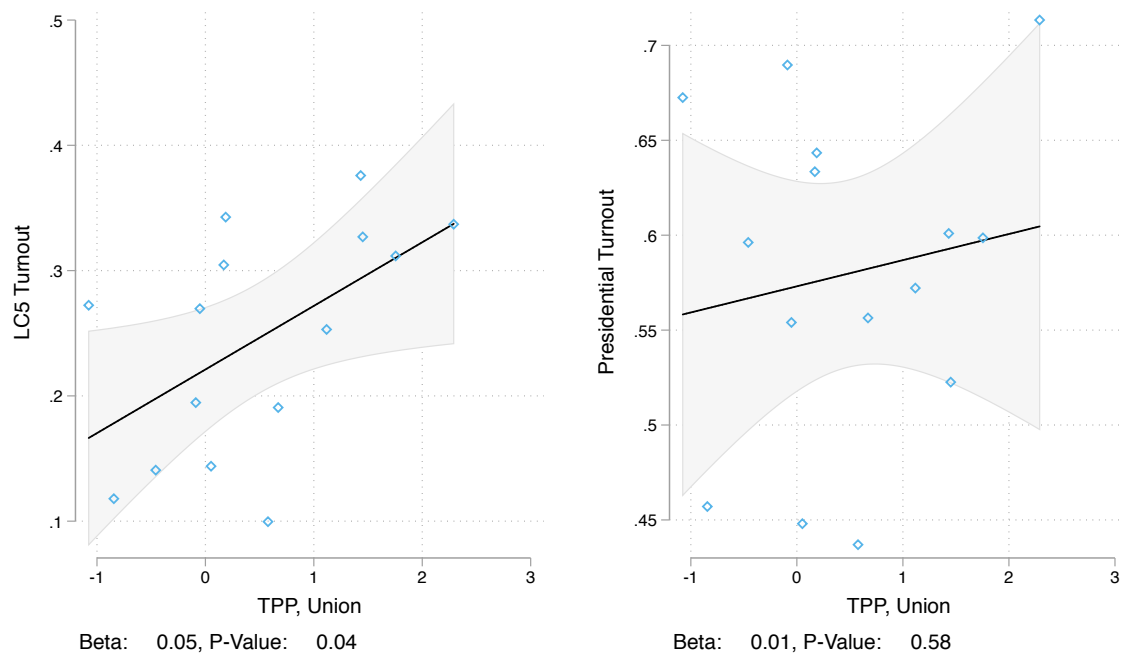
We interpret the correlation in the LC5 elections as support for network structure theories of social influence. Moreover, we suspect the difference in results between the presidential election

---

<sup>2</sup>The average person in our survey has 0.3 reciprocated friends, and 1.5 reciprocated family ties, suggesting limits placed on the number of reportable names resulted in under-reporting of reciprocations.

Figure 1

Theoretically Predicted Participation & Turnout



Difference between elections significant at  $p = 0.12$

*Notes:* The above plot presents the partial correlation between Theoretically-Predicted Participation (TPP) and voter turnout in the Ugandan Presidential and LC5 Chair Elections. Grey bands indicate 95% confidence intervals. As detailed in Section 2.3, TPP is operationalized as the first principle component of normalized TPP scores across all parameter choices (as TPP is highly correlated across parameters). Turnout is shares of the adult village population. Regressions corresponding to these plots, as well as tests for the statistical significance of differences across elections can be found in Appendix F, along with analogous plots for different sub-networks. Adjustments for measurement/estimation error in TPP have not been made in these estimates; as a result their statistical difference from zero is likely under-stated, as measurement error in independent variables results in attenuation bias.

and the LC5 election may relate to media environments. In Uganda, the presidential election is a much higher-salience election that garners substantially greater media attention and entails far more campaign efforts. It seems likely that voters are exposed to information about the likelihood that peers and non-peers will turn out from many non-network channels, such as election rallies. As a result, the specific topology of village networks should matter less for shaping the social contexts that influence voter turnout decisions. As demonstrated in the right-hand panel of Figure 1, this is what we find, though the correlation is still in the predicted direction. In the lower-salience LC5 election, by contrast, a larger share of the information voters receive about anticipated participation likely comes through their day-to-day interactions and conversations, which are largely dictated by their social networks, increasing the observed correlation between network structure and turnout.

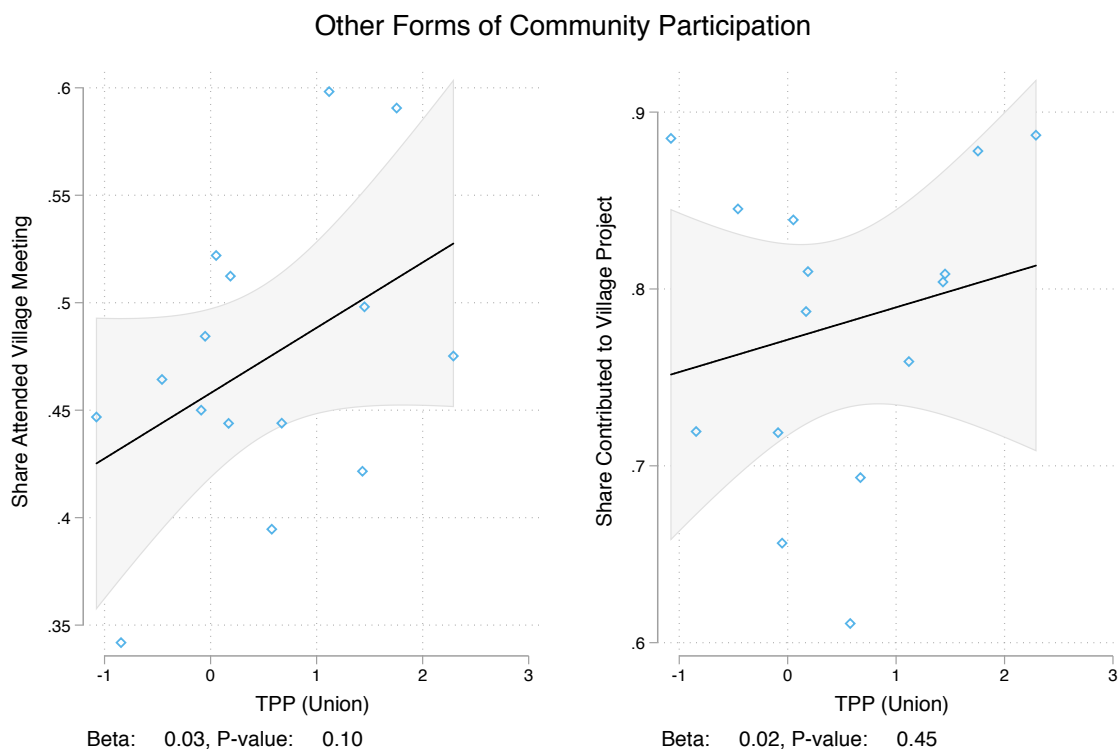
Of course, this is not the only possible explanation for this pattern. The higher salience of the presidential election may also result in voters being less influenced by social context and more influenced by their own political views (i.e. there may be a higher  $\beta_{sd}$  for that election), an explanation that would also have important implications for the scope conditions of future studies of network influence. Further research will be required to learn whether this result is generalizable, and if so, what is its exact cause.

## 4 Other Forms of Political Participation

While the focus of much research on social influence and networks has been on voter turnout, social context theory is generally agnostic about the specific form of social behavior being fostered. For example, a classic example of social context mirror comes from the increased likelihood of individuals to give money to street buskers when a confederate gives in front of them (Cialdini, 2015). With that in mind, we further examine the relationship between TPP and self-reported information on participation in village governance. In particular, we find that TPP correlates with (a) the share of villagers reporting having attended a village meeting and (b) the share who report having contributed (in time, cash, or labor) to a village project. These results are presented in Figure 2. Consistent with theory, we find that our correlation between political

participation and TPP holds up for these alternate behaviors, providing two additional data points in support of social context theory. In addition, in the case of meeting attendance, the correlation is quite strong and significant despite the relative small sample size and attenuation bias from measurement error in TPP.

Figure 2



*Notes:* The above plot presents the partial correlation between Theoretically-Predicted Participation (TPP) and two alternate forms of political participation: attendance at village meetings and contributions to village projects. Grey bands indicate 95% confidence intervals. As detailed in Section 2.3, TPP is operationalized as the first principle component of normalized TPP scores across all considered simulation parameters (as TPP highly correlated across parameters). Data on attendance and contributions is self-reported. Adjustments for measurement /estimation error in TPP have not been made in these estimates; as a result their statistical difference from zero is likely under-stated, as measurement error in independent variables results in attenuation bias.

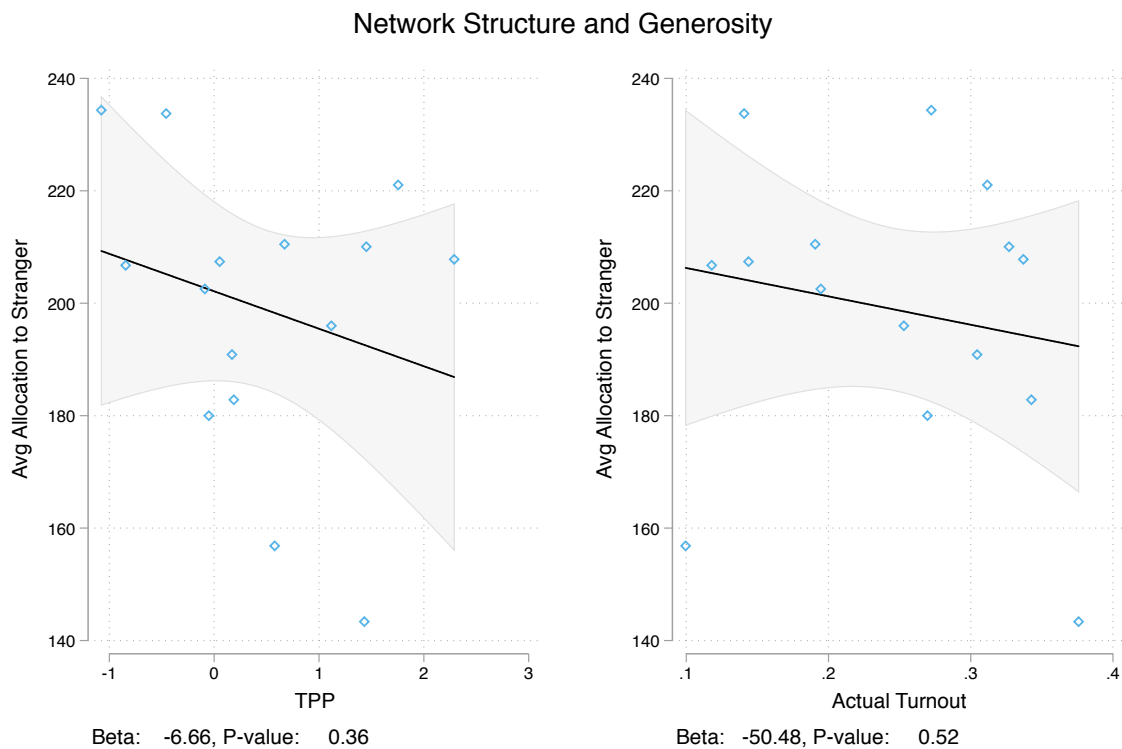
## 5 Alternate Explanations

We briefly address, and rule out, some alternative explanations for the observed correlation between TPP and voter turnout.

## 5.1 Differences in Pro-Social Norms

A common concern in observational network studies is that an unobserved third factor is driving both the behavior being measures and network structure. For example, one might worry that communities consisting of more pro-social individuals also tend to form networks with high TPP values, and are more likely to participate politically. We test for this directly using behavioral games conducted as part of a “lab-in-the-field” component of the survey from which this network data is drawn. In particular, we test whether villages with higher TPP are also villages in which participants are more other-regarding as measured in a divide-the-dollar dictator game.<sup>3</sup> If pro-sociality is driving both network structure and turnout, generosity in the divide-the-dollar game should be positively correlated with TPP. As shown in Figure 3, however, if anything, there is a *negative* correlation between pro-sociality among lab subjects and TPP.

Figure 3



*Notes:* The above plot presents the partial correlation between generosity and turnout (left) and TPP (right). Generosity is operationalized as the portion of ten 100UGX coins subjects agree to give to a randomly selected but unidentified village resident in a lab-in-the-field divide-the-dollar dictator game. Grey bands indicate 95% confidence intervals. As detailed in Section 2.3, TPP is operationalized as the first principle component of normalized TPP scores across all considered simulation parameters (as TPP highly correlated across parameters). Adjustments for measurement /estimation error in TPP have not been made in these estimates; as a result their statistical difference from zero is likely under-stated, as measurement error in independent variables results in attenuation bias.

<sup>3</sup>See Appendix I for game details.

In addition, we also find that higher turnout is correlated with high TPP when we look only at the network formed by family connections (Appendix F). As family connections are less likely to have been forged in response to an unobserved third factor (like pro-sociality), we take this as additional evidence that it is network structure that is driving this relationship.

## 5.2 Role of Central Actors

Are differences between the networks in our study driven by the mobilization efforts of central actors? To examine this, we drop the five people with the highest eigenvector centrality from each network. If variation in our measure of TPP were being driven by the presence of a few highly central brokers in some networks, then we would expect the correlation between turnout and this modified TPP to decrease. Instead, as shown in Figure 4, our LC5 results are strengthened and presidential results remain in the correct direction, indicating that the results are driven by general network structure rather than a small number of facilitators.<sup>4</sup>

## 5.3 Information Diffusion

A final concern is that networks that give rise to higher TPP may also be networks that better support the efficient diffusion of information, leading to greater turnout. In other words, one might imagine that the role of the social network has little to do with the social context model, but instead with the diffusion through the social network of information, for example about the time and place of the local election, or candidates' policy platforms.

We offer two tests of this possibility. First, we correlate awareness of the UBridge program with TPP. UBridge was a novel program introduced by USAID to a number of individuals within each village. If the efficiency by which networks diffuse information is driving our results, then UBridge awareness and TPP should be positively correlated. As shown in Figure 5, they are

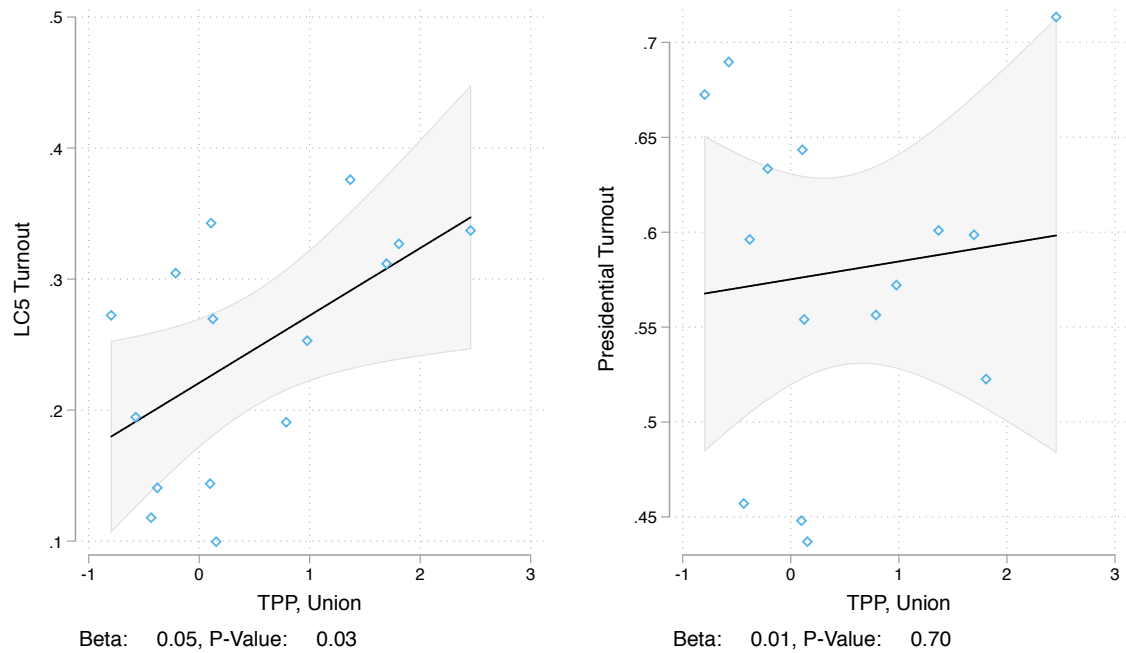
---

<sup>4</sup>We employ this strategy rather than regressing turnout on the eigenvector centrality scores of the top five people in each village to avoid the difficulty of comparing eigenvector centrality scores across networks. Eigenvector centrality is fundamentally a measure of *relative* centrality among the vertices of a given network, making interpretation of direct (cardinal) comparisons of centrality scores across networks problematic.



Figure 4

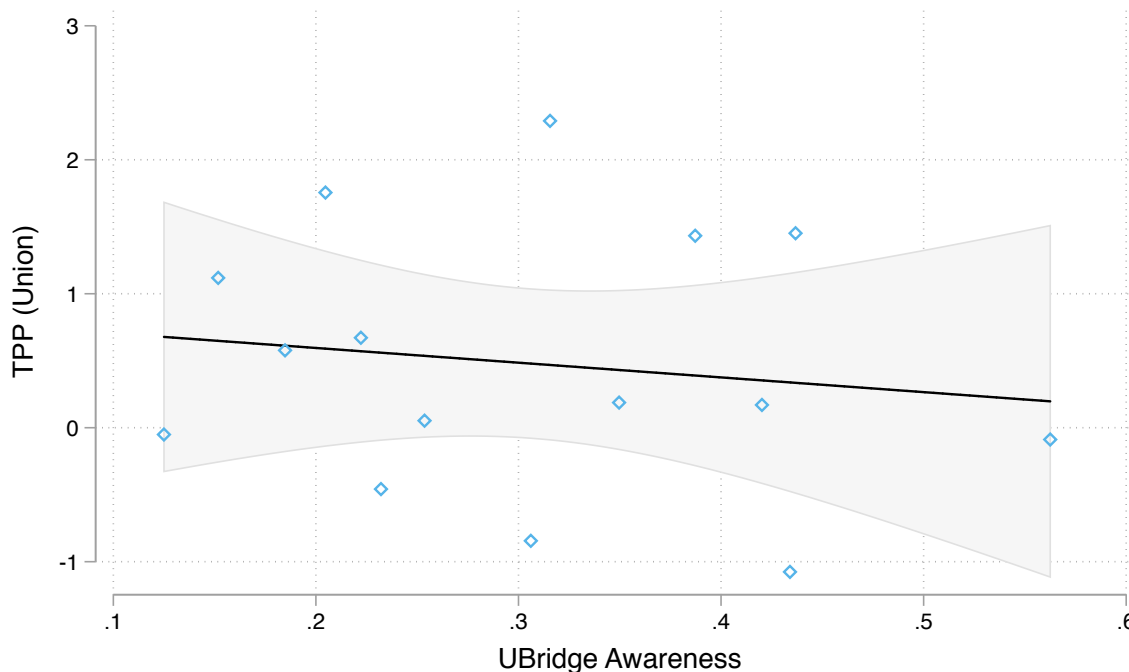
Theoretically Predicted Participation & Turnout  
With 5 Highest Centrality Dropped



Notes: The above plot presents the partial correlation between voter turnout in the Ugandan Presidential and LC5 Chair Elections and a modified version of TPP. Grey bands indicate 95% confidence intervals. In particular, TPP has been re-calculated by removing the five individuals with highest eigenvector centrality from each network and re-running TPP simulations on those networks.

not. Moreover, as shown in Appendix K, TPP remains a significant predictor of turnout even when regressing turnout on TPP and UBridge awareness.

Figure 5: UBridge Awareness & TPP



Beta: -1.10, P-Value: 0.62  
 Awareness is share of village residents aware of UBridge, TPP.

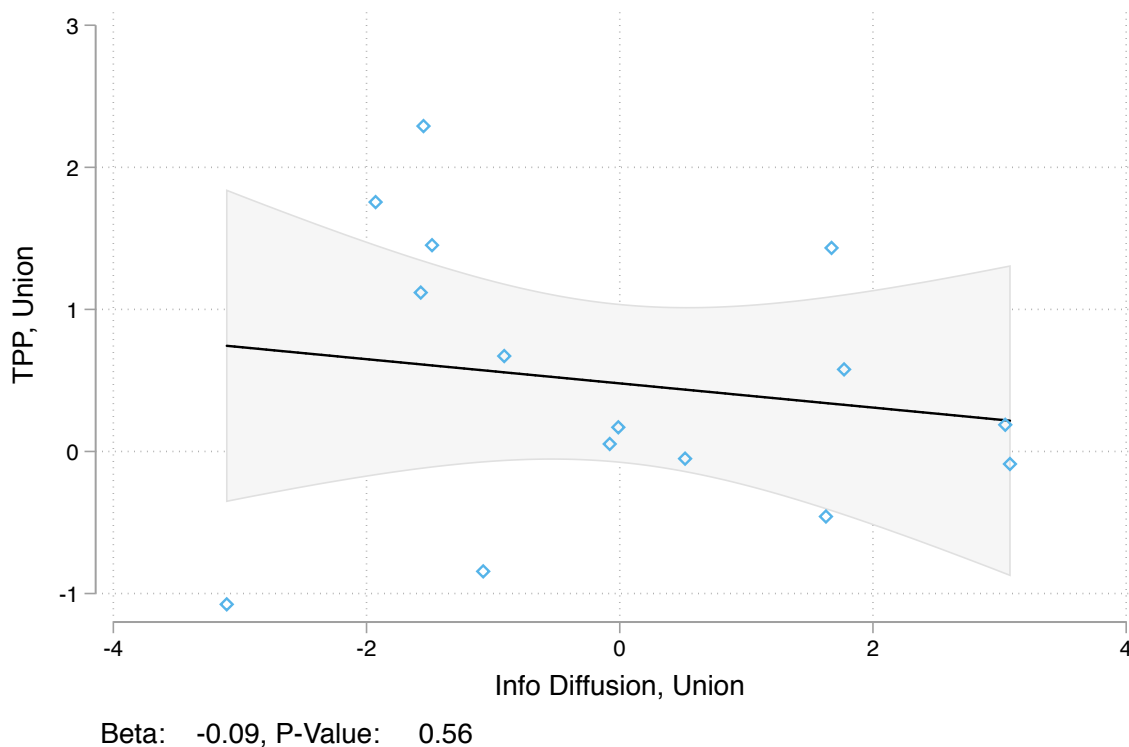
*Notes:* The above plot presents the partial correlation between the share of each village that reports awareness of the UBridge program in household surveys and TPP. Grey bands indicate 95% confidence intervals. As detailed in Section J, TPP is operationalized as the first principle component of normalized TPP scores across all simulation parameters. Adjustments for measurement /estimation error in TPP have not been made in these estimates; as a result their statistical difference from zero is likely under-stated, as measurement error in independent variables results in attenuation bias.

Second, we take advantage of the fact that the properties of networks that support information diffusion are quite distinct from the properties that support high participation in social context models, allowing for easy differentiation of these mechanisms.<sup>5</sup> This makes it possible to create an empirically distinct measure of each village network’s ability to support information diffusion via simulation. In particular, we operationalize “diffusion efficiency” as the average share of each village reached within a given number of steps of a diffusion simulation (see Appendix J for more details).

<sup>5</sup>The reason is similar to the reason that average degree is not a good predictor of equilibrium participation in social context models. Consider a fully connected network. This network will diffuse information quickly, but may not support high TPP. This is because when rabble rousers are relatively rare, participation will only increase if the network has small pockets where these rabble rousers constitute a large portion of the local neighborhood, making it possible for them to have sufficient influence to induce others to participate. In a fully connected network, if rabble rousers are rare globally, they will also be rare in every local neighborhood, and thus will never induce increased participation.

As shown in Figure 6, we find diffusion efficiency is uncorrelated with TPP. And as with UBridge awareness, TPP remains a significant predictor of turnout even when regressing turnout on TPP and information diffusion efficiency (Appendix K).

Figure 6: Simulated Information Diffusion and TPP



*Notes:* The above plot presents the partial correlation between the simulated information diffusion efficiency with which village networks diffuse information and TPP. Grey bands indicate 95% confidence intervals. As detailed in Section J, diffusion efficiency is operationalized as the first principle component of normalized diffusion rates across a number of simulation parameters, analogous to the operationalization of TPP. Adjustments for measurement /estimation error in diffusion efficiency have not been made in these estimates; as a result their statistical difference from zero is likely under-stated, as measurement error in independent variables results in attenuation bias.

## 5.4 Conclusions

This study provides, to the best of our knowledge, the first direct, empirical test of the theoretical predictions of social context theory, which hitherto was only substantiated using simulated (as compared to real-world) data. It finds that at least among the 15 Ugandan villages examined herein, the theoretical predictions of Siegel (2009) and Rolfe (2012) on how network structure may impact political participation are borne out.

In addition to providing the first test of these theories based on real-world (i.e., not purely simulation-based) data, our exercise offers several important lessons for network scholars. Most

importantly, it suggests that the importance of networks may be contingent on the environment being studied. In particular, our results suggest individuals are exposed to extensive messaging by extra-network mediums, the influence of network dynamics may be diminished. Of course, in a single study we cannot show with certainty this the reason for our heterogeneous results — it is also possible voters care more about the Presidential elections and as a result their behavior may be less influenced by that of their peers. Nevertheless, these results suggest a possible direction for future research, both to validate the core result, and potentially to explore how increasing dependence on network-based social media rather than mass media for all forms of political information may influence political behavior.

It also points to the promise of using rich empirical measures to differentiate between mechanisms of network influence. Because we use theoretically-motivated measures (like diffusion efficiency and TPP), we are able to move beyond just showing that “networks matter” and actually offer empirical evidence to show *why* they matter.

Finally, this paper also hints at resolutions to remaining puzzles in the study of social context and turnout. For instance, large differences in turnout between urban and rural voters may have to do with geographic variation in the structure social networks. Members of racial minority groups may be more likely to participate when living amongst other minorities because of the social networks in which they are embedded, and declines in turnout associated with residential moves might have to do with disruptions in the social networks that sustain political participation.

## References

- Centola, Damon. 2015. "The Social Origins of Networks and Diffusion." *American Journal of Sociology* 120(5):1295–1338.
- Centola, Damon and Michael Macy. 2007. "Complex contagions and the weakness of long ties." *American journal of Sociology* 113(3):702–734.
- Cialdini, Robert B. 2015. "Basic Social Influence Is Underestimated." *Psychological Inquiry* 16(4):158–161.
- Cruz, Cesi, Julien Labonne and Pablo Querubin. 2017. "Politician Family Networks and Electoral Outcomes: Evidence from the Philippines." *American Economic Review* 107(10):3006–37.
- Eubank, Nicholas and Dorothy Kronick. 2019. "Friends Don't Let Friends Free Ride." *Working paper* .  
**URL:** <https://bit.ly/2JizjF8>
- Ferrali, Romain, Guy Grossman, Melina Platas and Jonathan Rodden. 2019. "It Takes a Village: Peer Effects and Externalities in Technology Adoption." *Working Paper* .  
**URL:** <https://bit.ly/2FvncCc>
- Fowler, James H. 2005. Turnout in a Small World. In *Social Logic of Politics*. Philadelphia: Temple University Press pp. 269–287.
- Gerber, Alan S, Donald P Green and Christopher W Larimer. 2008. "Social Pressure and Voter Turnout: Evidence from a Large-Scale Field Experiment." *American Political Science Review* 102(1):33–48–48.
- Goyal, Sanjeev. 2012. *Connections: an introduction to the economics of networks*. Princeton University Press.
- Ioannides, Yannis Menelaos. 2013. *From neighborhoods to nations: The economics of social interactions*. Princeton University Press.
- Jackson, Matthew O. and Leeat Yariv. 2010. Diffusion, Strategic Interaction, and Social Structure. In *Handbook of Social Economics*, ed. Jess Benhabib, Alberto Bisin and Matthew O. Jackson. Elsevier.
- Knoke, David and Song Yang. 2008. *Social Network Analysis*. Los Angeles: Sage Publications.
- Larson, Jennifer M. 2017. "Why the West Became Wild: Informal Governance with Incomplete Networks." *World Politics* 69(4):713–749.
- Larson, Jennifer M and Janet I Lewis. 2017. "Ethnic Networks." *American Journal of Political Science* 61(2):350–364.
- Larson, Jennifer M, Jonathan Nagler, Jonathan Ronen and Joshua A Tucker. 2017. "Social Networks and Protest Participation: Evidence from 130 Million Twitter Users ." *Working Paper* .  
**URL:** <https://bit.ly/2EjYWC8>
- McClurg, Scott D. 2003. "Social Networks and Political Participation: The Role of Social Interaction in Explaining Political Participation." *Political research quarterly* 56(4):449–464.

- Newman, Mark. N.d. *17 Epidemics on networks*. Networks: An Introduction Oxford University Press.
- Rojo, Guadalupe, Subhash Jha and Erik Wibbels. 2014. "Political Networks, Clientelism and Public Goods: Evidence from Slums in Udaipur, India." *Working paper* .  
**URL:** <https://bit.ly/2HHWu9c>
- Rolfe, Meredith. 2012. *Voter Turnout: A Social Theory of Political Participation*. Cambridge: Cambridge University Press.
- Ross, Lee and Richard E Nisbett. 2011. *The person and the situation: Perspectives of social psychology*. Pinter & Martin Publishers.
- Siegel, David A. 2009. "Social Networks and Collective Action." *American Journal of Political Science* 53(1):122–138.
- Sinclair, Betsy. 2012. *The Social Citizen: Peer Networks and Political Behavior*. Chicago: The University of Chicago Press.
- Wolfinger, Raymond E and Steven J Rosenstone. 1980. *Who votes?* Vol. 22 Yale University Press.

# Online Appendix

## A Network Survey

We collect data from a set of Ugandan villages that took part in a multi-year program called Governance, Accountability, Participation, and Performance (GAPP), which was implemented by RTI International and funded by the United States Agency for International Development (USAID) in Arua district, Uganda. 16 villages were selected from a set of over 131 villages that were part of the U-Bridge program, the maximum number that could be enumerated considering budget constraints. Half of the villages had a relatively high level of adoption of the U-Bridge program given village characteristics, and half of which had low levels of adoption. the process of selecting the highest and lowest performers was as follows. We regressed village level adoption of the U-Bridge technology on village-level predictors, and generate a set of predicted values for the dependent variable. We then calculated the difference between the predicted value and the actual value of U-Bridge adoption. Using these residuals, we selected the 8 highest performing and the 8 lowest performing villages with respect to U-Bridge adoption.

We conducted a census in each village in order to collect complete network data, interviewing every available adult who was a resident in the village. This involved a village listing prior to enumeration, the purpose of which was to create a written record of all of the names and household locations for all adults in the villages. To do this the enumerator met with the village leader (in Uganda, called an LC1) and two other village leaders (usually a member of the Village Health Team and an additional village elder or community leader). Together they drew a map of the village identifying every location of a household and major geographical features (e.g., rivers, churches, etc.). Then the group created a list—using their shared knowledge of those households—to identify and name every adult in the village. The enumerator entered this information into a tablet along with other key identifying information such as quadrant (an arbitrary division of the village created by the enumerator—designed to divide the village into four equal portions), age and gender of the potential respondent. These names were then used in the network section of the survey, where respondents were asked about four types of social

ties. The exact question wording for the social ties is as follows:

“In each of the following questions, we will ask you to think about people in your community and their relationships to you.”

- **Family:** “Think about up to five family members in this village not living in your household with whom you most frequently spend time. For instance, you might visit one another, eat meals together, or attend events together.”
- **Friends:** “Think about up to five of your best friends in this village. By friends I mean someone who will help you when you have a problem or who spends much of his or her free time with you. If there are less than five, that is okay too.”
- **Lender:** “Think about up to five people in this village that you would ask to borrow a significant amount of money if you had a personal emergency.”
- **Problem solver:** “Imagine there is a problem with public services in this village. For example, you might imagine that a teacher has not come to school for several days or that a borehole in your village needs to be repaired. Think about up to five people in this village whom you would be most likely to approach to help solve these kinds of problems.”

## **B Turnout Estimation**

As previously noted, this analysis assumes that votes at a precinct (polling place) are evenly distributed among voters registered at that precinct from different villages.

To illustrate, assume that at Precinct 1, 200 votes were cast. If 75% of the voters registered at Precinct 1 come from Village A and 25% come from Village B, we assume that Village A contributed 150 votes and Village B contributed 50 votes. Turnout for each village is then calculated as the sum of votes we infer to have been cast by its residents at all Precincts. By assuming that at a given precinct all villages have the same turnout, this estimation should bias our analysis in favor of *not* finding differences in turnout across villages.



One constraint of this measure is that the accuracy of these estimates will be related to the correspondence of villages to precincts. If each village sends all residents to its own polling place (i.e. that polling place is only attended by residents of one village), inferences about village voting will be perfect. If, by contrast, all villages send their voters to a single polling place, effectively no information can be learned about how individual villages voted.

This correspondence can be summarized using a *concentration* statistic, where higher values mean the mapping from precincts to villages is more precise. For a village  $v \in V$  and a polling place (precinct)  $p \in P$ , let  $voters_v$  be the set of voters who live in  $v$ , let  $voters_p$  be the set of voters who vote at polling place  $p$ , and let  $voters_{v,p}$  be the set of voters who reside in  $v$  and voted at  $p$ . Then:

$$concentration_{v,p} \equiv \frac{\#voters_{v,p}}{\#voters_p} \quad (1)$$

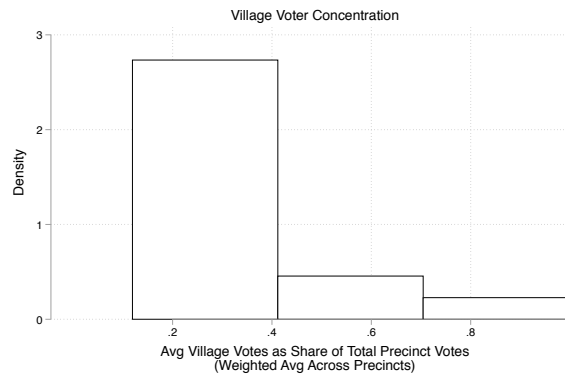
In other words,  $concentration_{v,p}$  is the share of voters at a precinct from village  $v$ .

Since each village sends people to multiple polling places, however, we must then calculate a weighted average of  $concentration_{v,p}$  across polling places where the weight for each polling place is the share of voters from each village going to that polling place. Formally:

$$concentration_v \equiv \sum_{p \in P} concentration_{v,p} * \frac{\#voters_{v,p}}{\#voters_v} \quad (2)$$

The distribution of this statistic are presented in Figure 7:

Figure 7



## C TPP Simulation Notes

### C.1 Participation Updating

Updating of the  $participation_{v,t+1}$  is accomplished by iterating through all vertices in the network in random order and having each vertex update its value of  $lpr$  and its participation  $participation_{v,t+1}$  *sequentially* rather than simultaneously. This is the one departure from Siegel (2009). When all vertices update  $lpr$  simultaneously, it is possible to converge to a “flashing” state in which at time  $t$  a portion of the network is planning to vote while another portion is not planning to vote, at time  $t + 1$ , these two groups flip inclinations, and at time  $t + 2$  they return to their initial state. This is caused by knife-edge simultaneity of updating, which seems unrealistic, since real updating is almost certainly sequential. Thus simulation uses sequential updating.

### C.2 Convergence

The simulation is run until no more than 1% percent of the vertices in the network change participation status for at least 20 consecutive periods. Results below are averaged across 2,500 runs for each set of parameter values.

## D Parameter Choices

These parameter values are chosen because they effectively cover the range of values that give rise to interesting dynamics. Significantly higher values of  $\beta_{mean}$  tend to result in convergence to full participation, while substantially lower values lead to non-dynamic simulations (those with values of  $\beta > 1$  participate, but they are rare and others tend to have very low proclivities to participate, as a result of which almost no vertices flip from non-participation to participation). Similarly, larger values of  $\beta_{sd}$  increase the share of individuals whose behavior is unaffected by the behavior of other so much that the simulations tend not to be dynamic. In these non-dynamic settings, all networks are essentially comparable, as participation ends up being roughly equal to the share of nodes with  $\beta_{mean} > 1$ , which is the same for all networks in expectation.

Note that we exclude one parameter pair from those sets ( $\beta_{mean} = 0.5, \beta_{sd} = 0.25$ ), as it generates almost no unconditional participators, and thus no dynamics.

## E Social Context Simulation Validity

Table 3: Correlations across Parameter Values, Union Network

Variables	Mean 0.5, SD 0.5	Mean 0.6, SD 0.5	Mean 0.6, SD 0.25	Mean 0.7, SD 0.5	Mean 0.7, SD 0.25
Mean 0.5, SD 0.5	1.00				
Mean 0.6, SD 0.5	0.86	1.00			
Mean 0.6, SD 0.25	0.56	0.72	1.00		
Mean 0.7, SD 0.5	0.89	0.96	0.67	1.00	
Mean 0.7, SD 0.25	0.32	0.59	0.78	0.45	1.00

Table 4: Correlations across Parameter Values, Family Network

Variables	Mean 0.5, SD 0.5	Mean 0.6, SD 0.5	Mean 0.6, SD 0.25	Mean 0.7, SD 0.5	Mean 0.7, SD 0.25
Mean 0.5, SD 0.5	1.00				
Mean 0.6, SD 0.5	0.95	1.00			
Mean 0.6, SD 0.25	0.80	0.86	1.00		
Mean 0.7, SD 0.5	0.95	0.98	0.88	1.00	
Mean 0.7, SD 0.25	0.83	0.87	0.85	0.91	1.00

Table 5: Correlations across Parameter Values, Friends Network

Variables	Mean 0.5, SD 0.5	Mean 0.6, SD 0.5	Mean 0.6, SD 0.25	Mean 0.7, SD 0.5	Mean 0.7, SD 0.25
Mean 0.5, SD 0.5	1.00				
Mean 0.6, SD 0.5	0.99	1.00			
Mean 0.6, SD 0.25	0.97	0.99	1.00		
Mean 0.7, SD 0.5	0.98	0.99	0.98	1.00	
Mean 0.7, SD 0.25	0.97	0.98	0.97	0.99	1.00

Table 6: Correlations across Parameter Values, Lender Network

Variables	Mean 0.5, SD 0.5	Mean 0.6, SD 0.5	Mean 0.6, SD 0.25	Mean 0.7, SD 0.5	Mean 0.7, SD 0.25
Mean 0.5, SD 0.5	1.00				
Mean 0.6, SD 0.5	0.99	1.00			
Mean 0.6, SD 0.25	0.98	0.98	1.00		
Mean 0.7, SD 0.5	0.99	0.99	0.98	1.00	
Mean 0.7, SD 0.25	0.97	0.97	0.97	0.98	1.00

Table 7: Correlations across Parameter Values, Solver Network

Variables	Mean 0.5, SD 0.5	Mean 0.6, SD 0.5	Mean 0.6, SD 0.25	Mean 0.7, SD 0.5	Mean 0.7, SD 0.25
Mean 0.5, SD 0.5	1.00				
Mean 0.6, SD 0.5	0.96	1.00			
Mean 0.6, SD 0.25	0.91	0.95	1.00		
Mean 0.7, SD 0.5	0.96	0.99	0.95	1.00	
Mean 0.7, SD 0.25	0.84	0.89	0.90	0.91	1.00

## F Turnout and TPP by Network Type

Table 8 presents the regressions underlying Figure 1.

Table 8: TPP and Turnout Regressions

	(1) Presidential	(2) LC5 Chair	(3) Pooled
Eqm Participation Index (Union)	0.014 (0.024)	0.051** (0.022)	0.014 (0.027)
LC5 Election * Eqm Participation			0.037 (0.022)
LC5 Chair Election			-0.35*** (0.020)
Observations	15	15	30

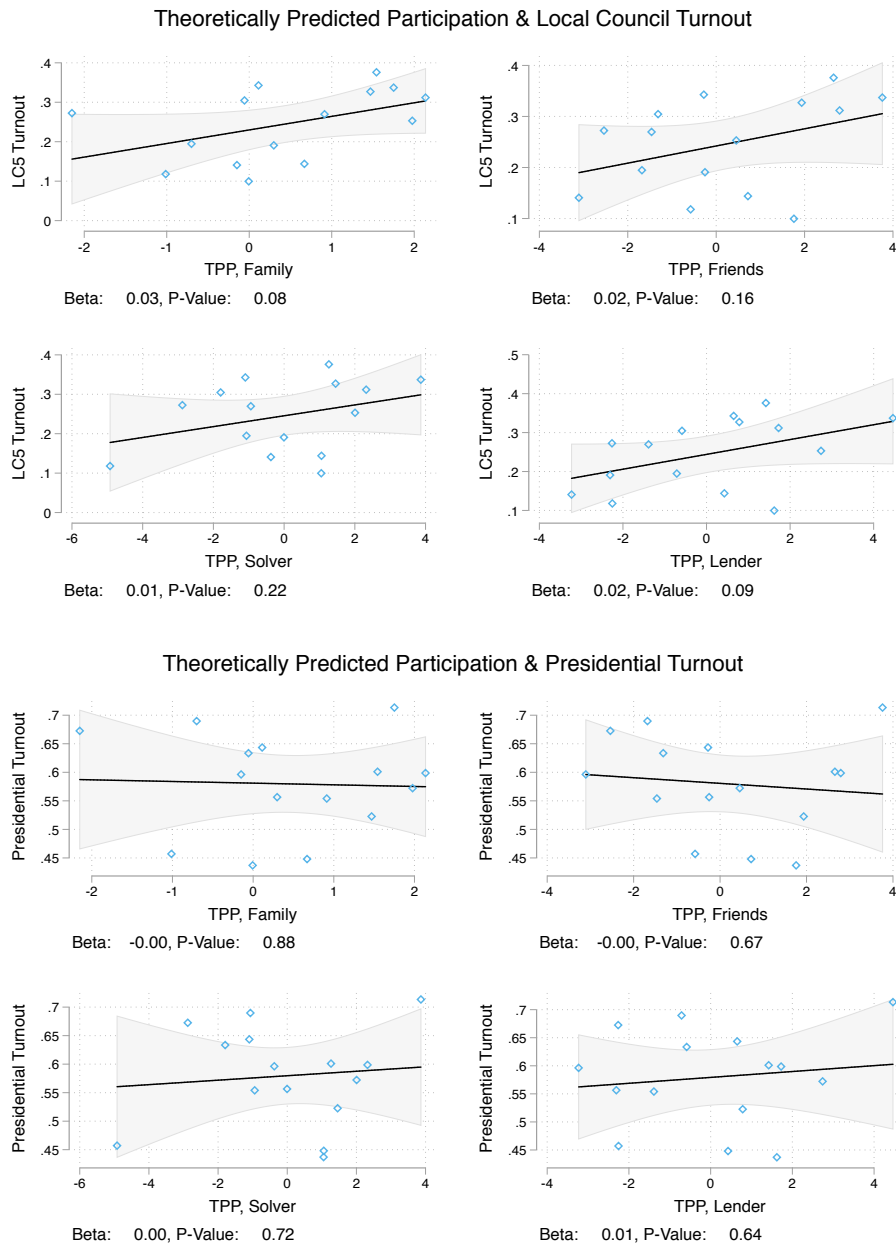
Standard errors in parentheses

\*  $p < 0.1$ , \*\*  $p < 0.05$ , \*\*\*  $p < 0.01$

Pooled estimates clustered at village level.

Figure 8 below shows the relationship between turnout and TPP simulated separately on the four different types of networks that contribute to the Union network presented in the main paper.

Figure 8



## G Robustness Regression Tables

The following tables show robustness of our primary result when controlling for ELF (Column 2), controlling for education (Column 3), subsetting on the half of villages with the best polling-place-village correspondence (Column 4), and when including the exceptionally small 16th village surveyed (Column 5).



Table 9: Robustness for LC5 Election

	(1) Basic	(2) ELF	(3) Educ	(4) Size	(5) Concentrate	(6) W/16th	(7) Village
TPP (Union)	0.051** (0.022)	0.049** (0.023)	0.052** (0.023)	0.045 (0.028)	0.048* (0.020)	0.014 (0.010)	0.040 (0.030)
ELF		-0.060 (0.13)					
Educ			0.060 (0.19)				
(Log) Network Size				0.052 (0.16)			-0.11 (0.12)
Observations	15	15	15	15	8	16	16

Standard errors in parentheses

\*  $p < 0.1$ , \*\*  $p < 0.05$ , \*\*\*  $p < 0.01$

Table 10: Robustness for Pres Election

	(1) Basic	(2) ELF	(3) Educ	(4) Size	(5) Concentrate	(6) W/16th	(7) Village
TPP (Union)	0.014 (0.024)	0.010 (0.024)	0.013 (0.026)	0.016 (0.032)	0.011 (0.028)	-0.026** (0.012)	0.011 (0.032)
ELF		-0.16 (0.14)					
Educ			-0.024 (0.21)				
(Log) Network Size				-0.017 (0.18)			-0.16 (0.13)
Observations	15	15	15	15	8	16	16

Standard errors in parentheses

\*  $p < 0.1$ , \*\*  $p < 0.05$ , \*\*\*  $p < 0.01$

## H Considering Non-Reciprocal Ties

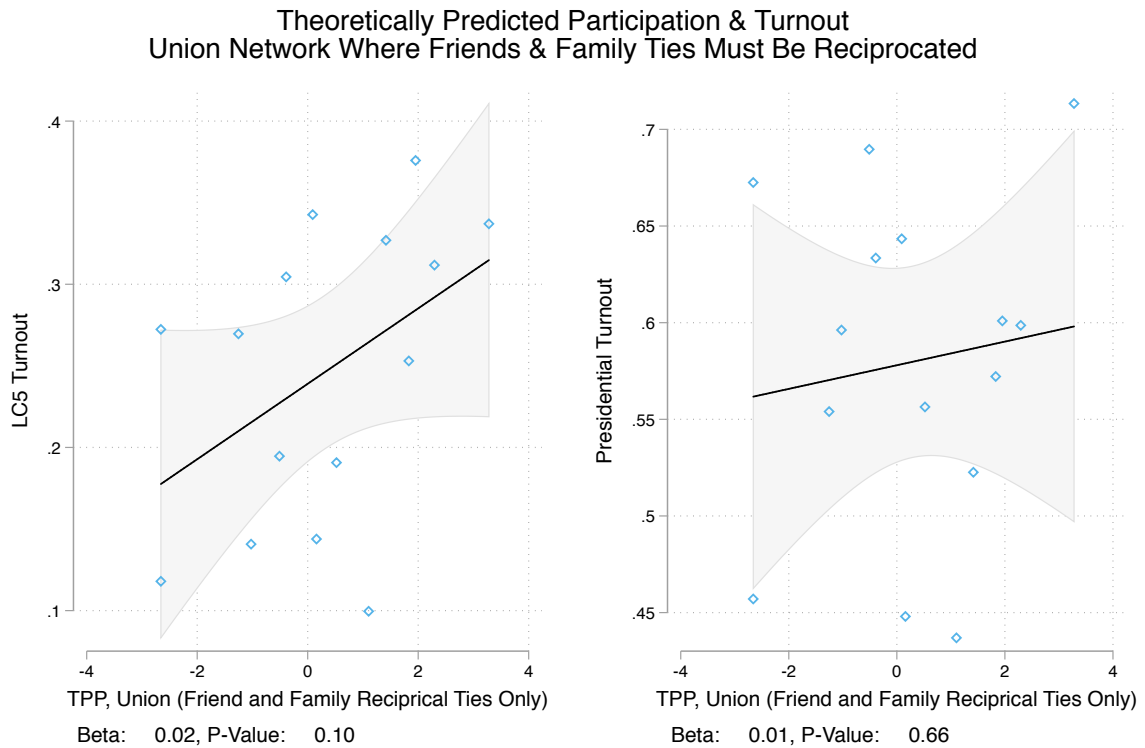
Figure 9 presents results when networks are created using only reciprocated ties to form Friends and Family ties (note the other two inputs into the Union network – the Lender / Solver networks – cannot be restricted in an analogous manner). The figures show results quite similar under this restriction.

As shown in Table 11, however, it is not clear that these restrictions are reasonable given the low average degree they generate in the Friend and Family networks. This may be due to censoring caused by the limited number of people individuals are allowed to list (5 family members and 5 friends), or failures to recall individuals.

Table 11: Network Summary Statistics: Including Only Reciprocated Friends and Family Ties

	Union	Friends	Family	Lender	Solver
Average Size	210.3	210.3	210.3	210.3	210.3
Average Num Connections	924.1	34.3	156.5	403.3	450.2
Average Degree	8.7	0.3	1.5	3.8	4.2
Min Size	160.0	160.0	160.0	160.0	160.0
Max Size	283.0	283.0	283.0	283.0	283.0

Figure 9



*Notes:* The above plot presents the partial correlation between Theoretically-Predicted Participation (TPP) and voter turnout in the Ugandan Presidential and LC5 Chair Elections where ties are only added between friends and family if ties are reciprocated. Grey bands indicate 95% confidence intervals. As detailed in Section 2.3, TPP is operationalized as the first principle component of normalized TPP scores across all parameter choices (as TPP is highly correlated across parameters). Turnout is shares of the adult village population. Regressions corresponding to these plots, as well as tests for the statistical significance of differences across elections can be found in Appendix F, along with analogous plots for different sub-networks. Adjustments for measurement /estimation error in TPP have not been made in these estimates; as a result their statistical difference from zero is likely under-stated, as measurement error in independent variables results in attenuation bias.

## I Divide-The-Dollar Game

The divide-the-dollar game was organized as follows: first, subjects were given ten 100UGX coins. Subjects were then advised that they could split these coins between themselves and a stranger, who they were told will be “someone from Arua whom you do not know personally. We chose the stranger by randomly selecting someone living in Arua district from a long list.”

## J Information Diffusion Simulation

We measure the ability of a network to efficiently diffuse information by running a simple diffusion model on our on empirical village networks. We then examine the average speed with which information spreads for each village.

Our decision to simulate this process is due to the fact that — as with social context influences — this is no simple statistic (like average degree or average shortest path length) which reliably summarizes the ability of a network to efficiently diffuse information when information spread is at least partially stochastic (Newman, N.d., p. 19-35).

Our simulation proceeds as follows:

1. At  $t = 0$ , one vertex  $v_0$  in the network (selected with uniform probability) is endowed with a unique piece of knowledge. It is thus “informed” ( $I(v_0) = 1$ ). All other vertices are assumed to be ignorant of this knowledge ( $I(v_j) = 0 \ \forall j \in V \setminus \{0\}$ ).
2. At  $t = 1$ , information spreads from  $v_0$  to each of the neighbors of  $v_0$ , denoted  $N(v_0)$  with i.i.d. probability  $\frac{p}{|N(v_0)|} \in (0, 1)$ .
3. Step 2 is then repeated indefinitely, where at each stage all “informed” vertices spread their knowledge to neighbors with i.i.d. probability  $p$ .

The ability of the network to support diffusion can then be specified as the number of people in the network that have become “informed” after  $s$  steps of the diffusion model. The larger the number of people “informed” for a given number of steps  $s$ , the more efficient a village’s network.

Note that the probability of information diffusion from a vertex to her neighbors is normalized by the number of neighbors. This can be thought of as approximating the idea that individuals can only have so many interactions in a given period of time. This normalization more closely approximates the idea that all individuals have the same probability of interacting and sharing information with at least  $a$  friend in a given period, a dynamic suggested by recent work on information diffusion elsewhere in Uganda (Larson and Lewis, 2017). With that said, results look similar without the normalization.

## **J.1 Information Diffusion Summary Statistics**

Table 12 below shows the correlation in the share of individuals in each village informed at different step thresholds, with different spread probabilities, and with different network spec-

ifications. As the table shows, inter-parameter correlations are quite high, and so an index is created for expositional ease by taking the first component of a PCA index for each network specification.

Table 12: Diffusion Correlations across Parameter Values

Variables	p 0.60, 10 steps, Union	p 0.60, 20 steps, Union	p 0.35, 10 steps, Union	p 0.35, 20 steps, Union
p 0.60, 10 steps, Union	1.00			
p 0.60, 20 steps, Union	0.76	1.00		
p 0.35, 10 steps, Union	0.98	0.64	1.00	
p 0.35, 20 steps, Union	0.97	0.86	0.93	1.00

## K Information Measures, Turnout, and TPP Regressions

Table 13: Turnout and TPP with Information Measure Controls

	(1)	(2)	(3)	(4)
	LC5 Chair	LC5 Chair	Presidential	Presidential
Eqm Participation Index (Union)	0.056** (0.020)	0.050** (0.023)	0.020 (0.022)	0.015 (0.026)
Share of Village Aware of UBridge	0.28 (0.16)		0.36* (0.17)	
Info Diffusion Simulation 1st Component		-0.0027 (0.012)		0.0024 (0.013)
Observations	15	15	15	15

Standard errors in parentheses

\*  $p < 0.1$ , \*\*  $p < 0.05$ , \*\*\*  $p < 0.01$